



das weiße haus

Die Räume in der Argentinierstraße

The space and rooms on Argentinierstraße



Argentinierstraße 11

das weisse haus

Eingangsbereich:
7 Glasvitrinen, Portiersloge

Innenhof (1 000 m²):
Screeningsfläche

Keller (70 m²)

Erdgeschoß (100 m²):
Garage, Teeküche, Büro, Ausstellungsraum (45 m²)

Stiegeshaus

1. Stock (100 m²):
Klassenzimmer (80 m²), Badezimmer + kleines Zimmer (20 m²)

2. Stock (100 m²):
Klassenzimmer (80 m²), Badezimmer + kleines Zimmer (20 m²)

entrance:
7 glass showcase, portsloge

courtyard (1 000 m²):
projection screen

cellar (70 m²)

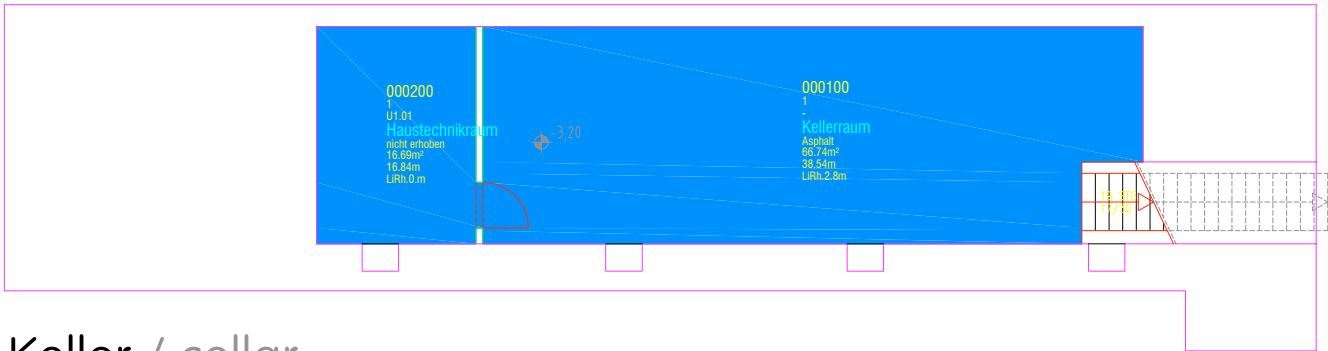
ground floor (100 m²):
garage, tea kitchen, office, exhibition space (45 m²)

staircase

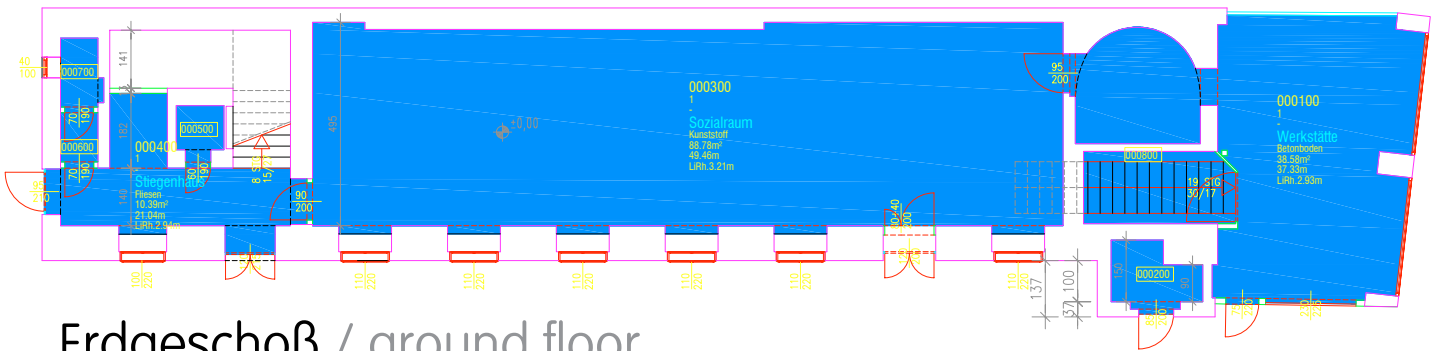
1st floor (100 m²):
class room (80 m²), bathroom + small room (20 m²)

2nd floor (100 m²):
class room (80 m²), bathroom + small room (20 m²)

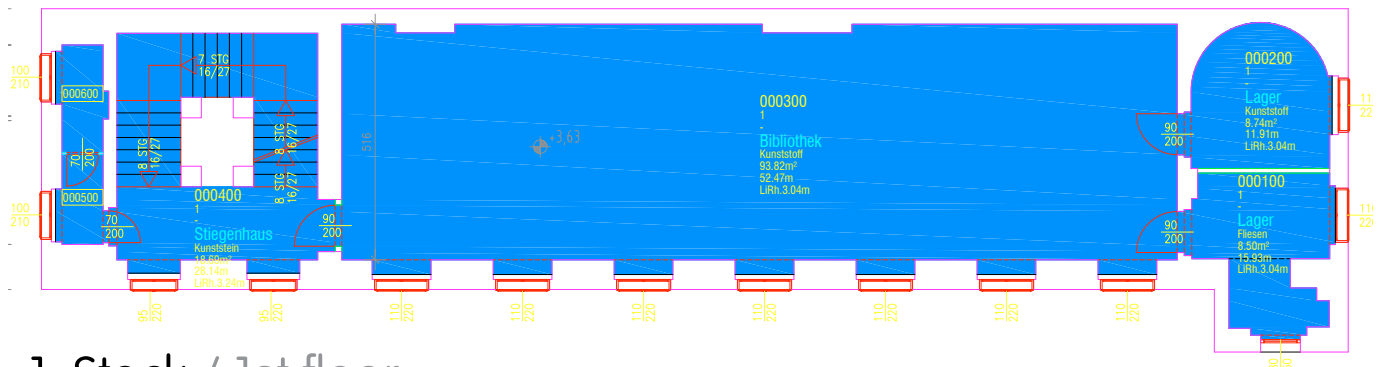
Raumpläne / floor plans



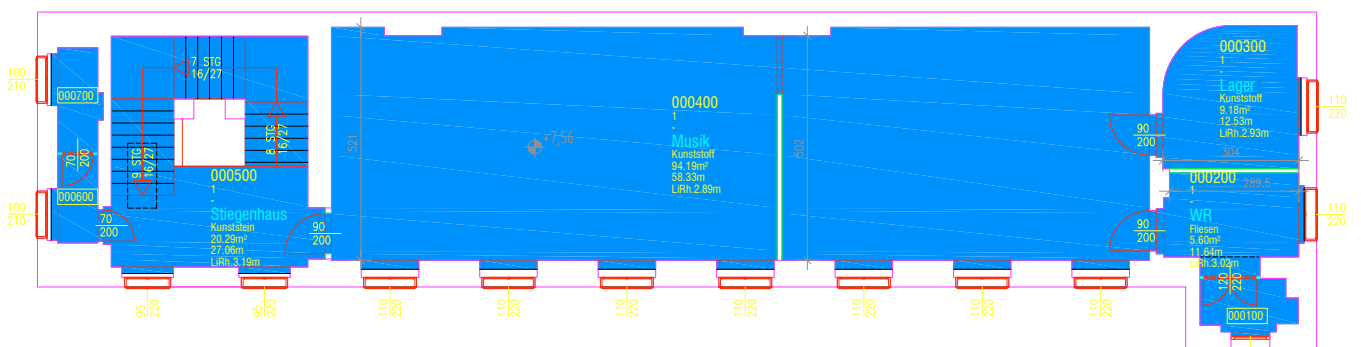
Keller / cellar



Erdgeschoß / ground floor



1. Stock / 1st floor



2. Stock / 2nd floor

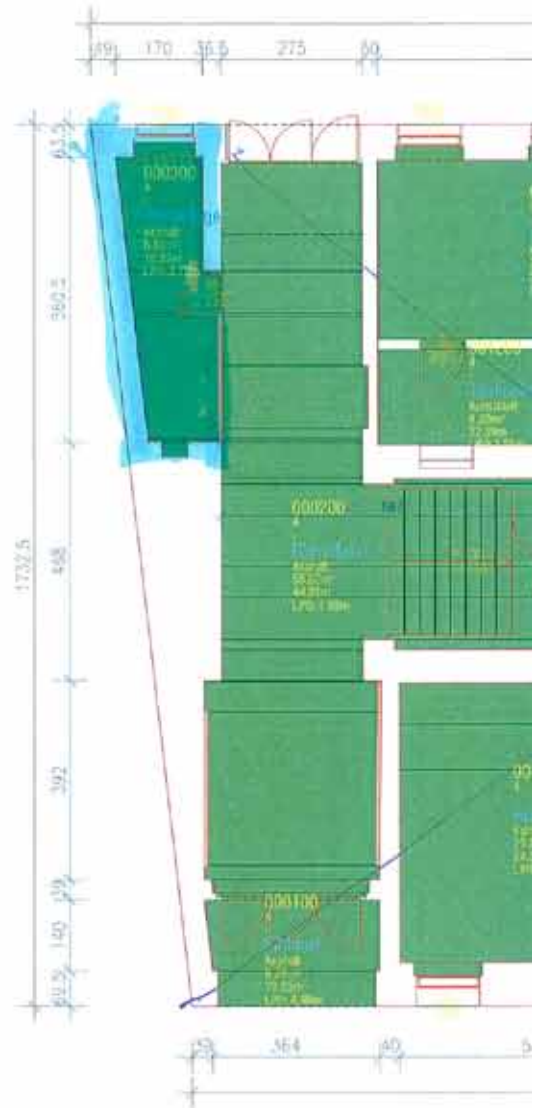
Eingangsbereich
entrance



Eingangsbereich entrance



Portiersloge portsloge



Innenhof courtyard



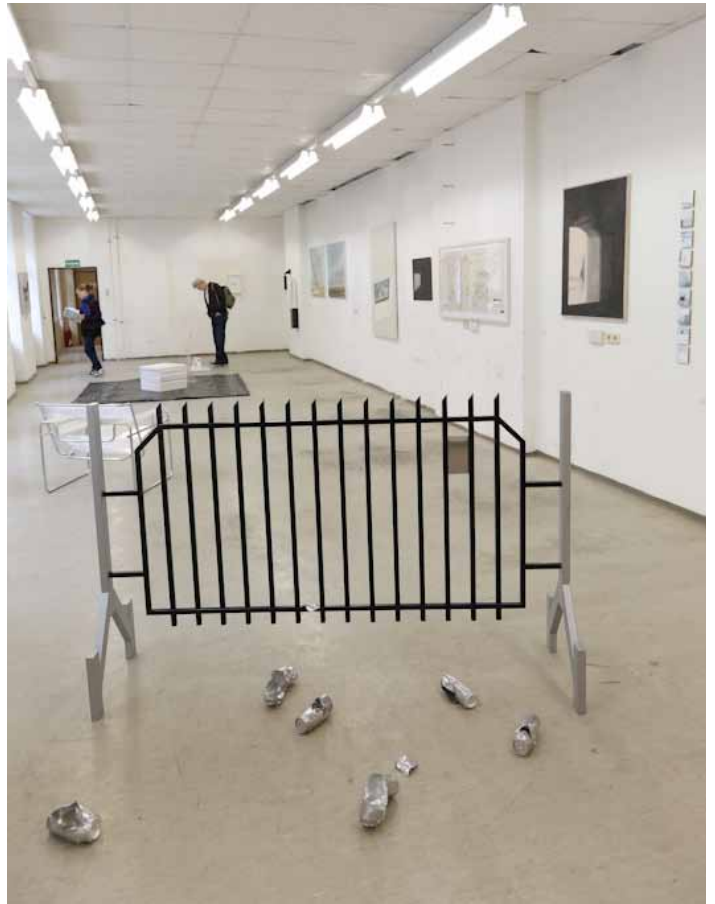
Keller cellar



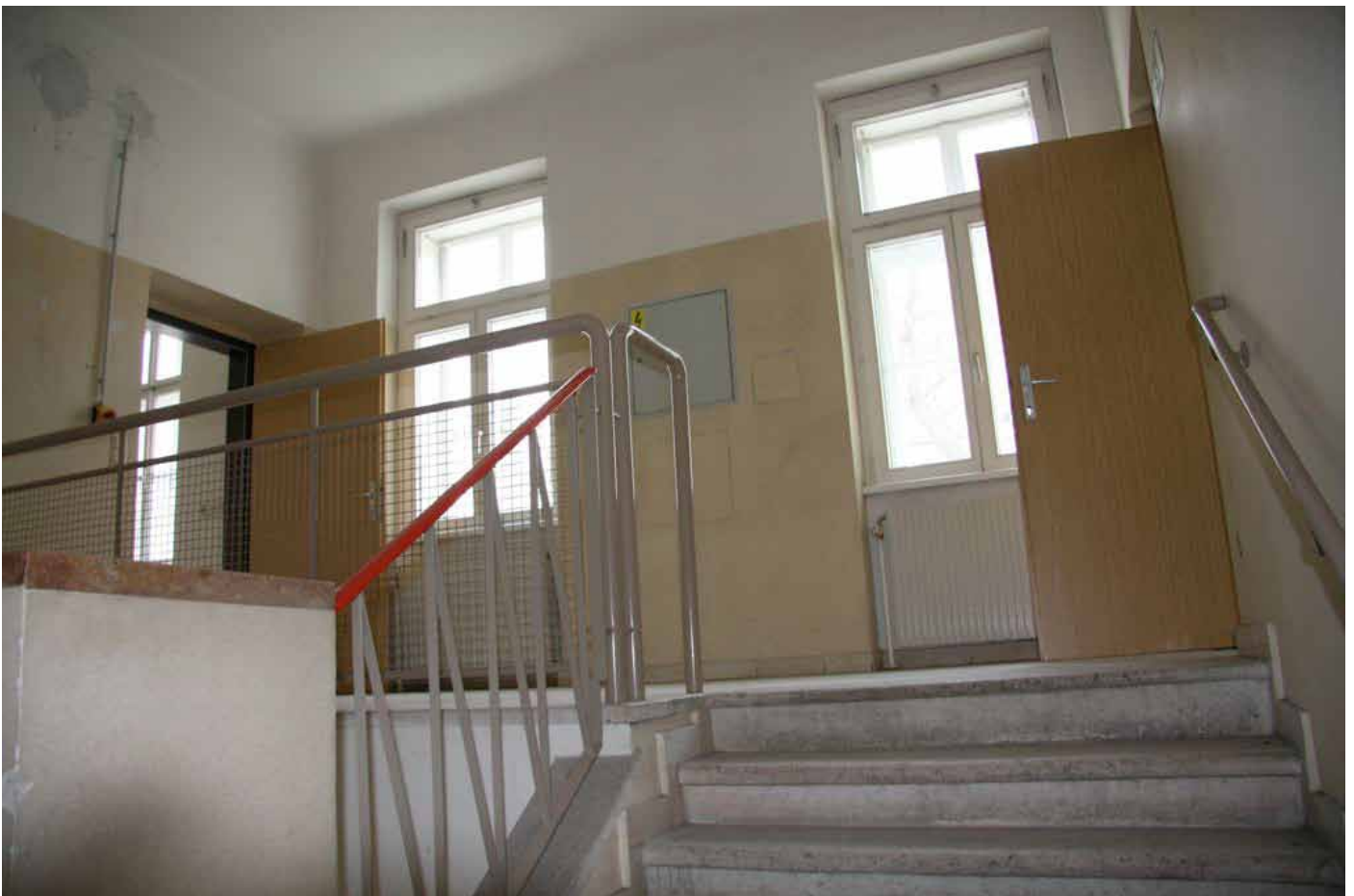
Erdgeschoß / ground floor



1. Stock / 1st floor



Stiegenhaus / staircase



2. Stock / 2nd floor

